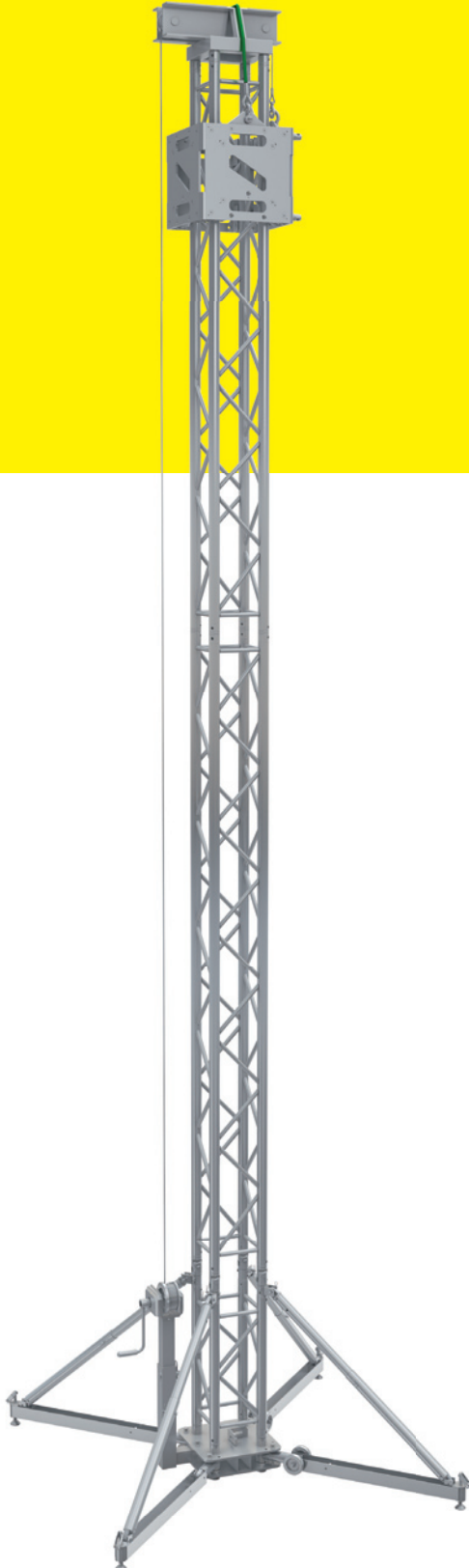


Sky and stage Tower MT05

MT05 is a light-duty self climbing truss tower ideal for small events & ground supports.

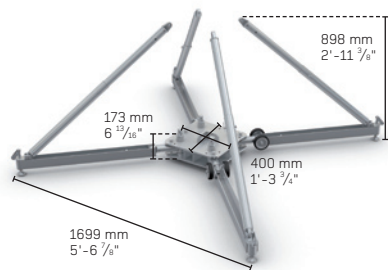
The MT05 is designed to use M290B Quatro verticals and a versatile sleeve block which can be configured for M290 or M390 Quatro. Safe, stable & simple lifting of loads can be completed using either a compact hand-winch or optional manual chain hoist or electric motor(s).



height m [ft]	6,2	20.34
capacity with handwinch kg [lbs]	500	1103
self weight kg [lbs]	125	276

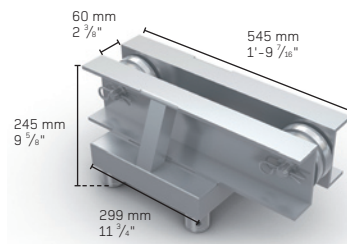
COMPONENTS REQUIRED TO CONSTRUCT ONE MT05 TOWER

MT05-01	aluminium base incl. outriggers	1 piece
MT05-02	head section chain and wire	1 piece
MT05-03	sleeve block	1 piece
MT05-06	hand winch alko	1 piece
MT05-07	hinge parts - set of 4 pcs	1 set = 4 pieces
MT05-10	safety wire	1 piece
QTB 700	QTB 0,7 m length	1 piece
QTB 2500	QTB 2,5 m length	1 piece
QTB 3000	QTB 3,0 m length	1 piece



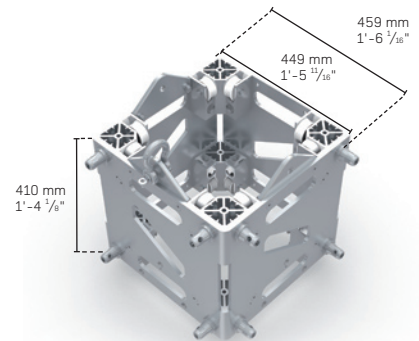
MT05 01 ALUMINIUM BASE

Base with foldable long outriggers.



MT05 02 HEAD SECTION

Head section to suit chain and wire.



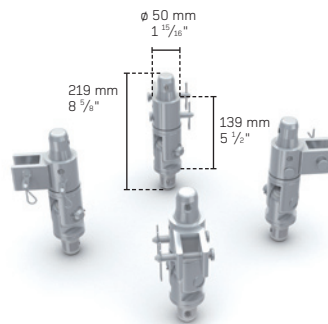
MT05 03 SLEEVE BLOCK

Whole aluminium sleeve block with powerful performance of 500 Kg capacity suitable for connecting of M290 and M390 systems.



MT05 06 HAND WINCH

The Alko hand winch is equipped with an aluminium square leg, which fits into the base.



MT05 07 HINGE PARTS

Used to connect the vertical Quatro pieces together and to allow for tilt-up assembly. 4 off Hinge Parts per set.



MT05 10 SAFETY WIRE

Use with MT05 to secure sleeve block.